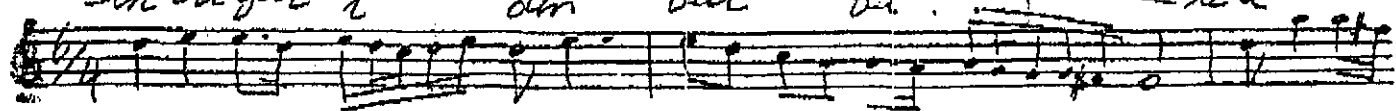


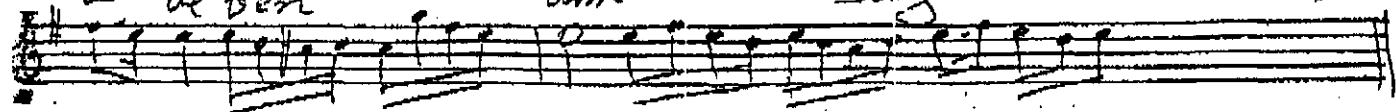
Yıyres nar eram şarhu)

«Bimen sen»

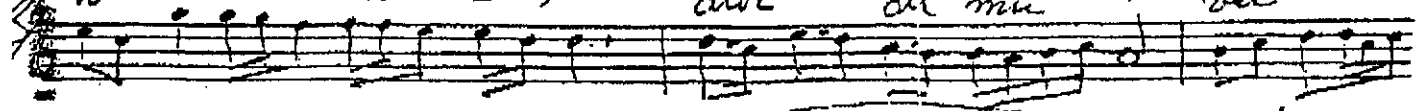
sen bir gül i din bülbülü a a a



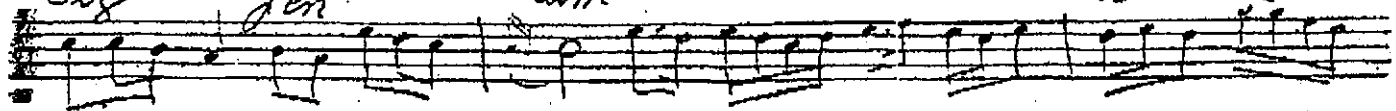
re de ben din sag



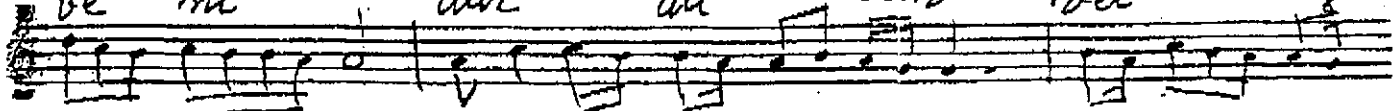
ev rin be ni sus dur du mü rüv vet



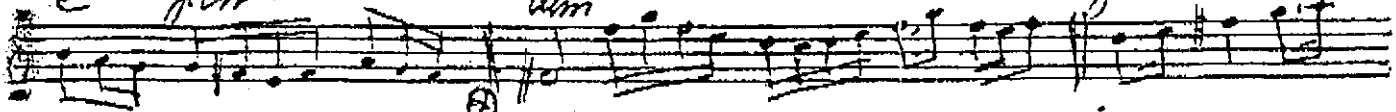
siz e fen din ev rin



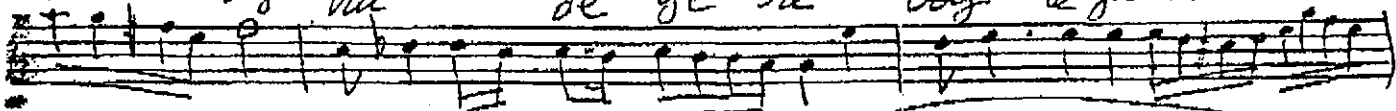
be ni sus dur du mü rüv vet siz



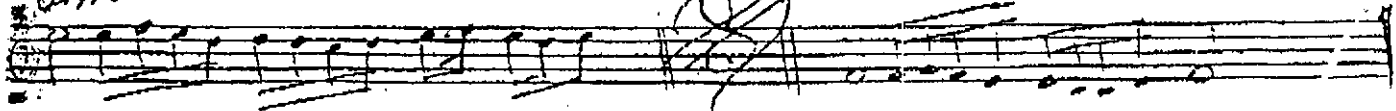
e fen din yan et me



ki bir hu de ye re böğ le gü cen



din koru



anagru



sen bir gül idin bülbülü avare de ben dim.

ev rin be ni sus dur du mü rüv vet siz ef endim.

yan et me ki bir hu de ye re böğ le gü cen

Yusif Deyi